

# H40 kerakoll

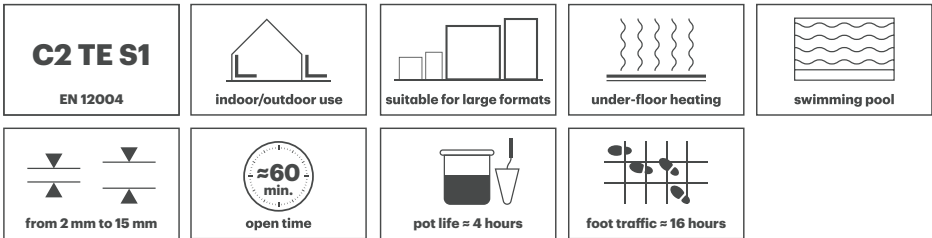
Multipurpose  
Gel-Adhesives,  
structural, flexible,  
thixotropic & fluid.  
For tiles and stone of  
all types and formats.



# H40 Gel

## The next generation standard-setting multipurpose Gel-Adhesive.

The new H40 Gel Gel-Adhesive combines unique workability and high performance. Its guaranteed thixotropic and fluid mix ensures actual durability on site.



- **High adhesion and deformable (S1 tested)**
- **Thixotropic & fluid**
- **Extended open time and pot-life**
- **Non slump and non slip**
- **Better coverage**



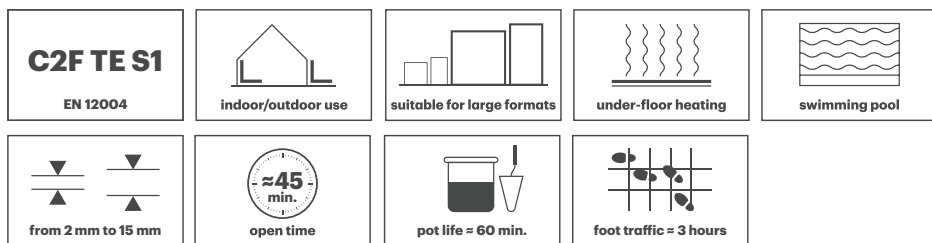
Grey

White

# H40 Advanced

## The next generation rapid-setting Gel-Adhesive with extended workability.

The new H40 Advanced Gel-Adhesive is the first of its kind - guaranteeing long workability and accelerated adhesion, ensuring safe application on site.

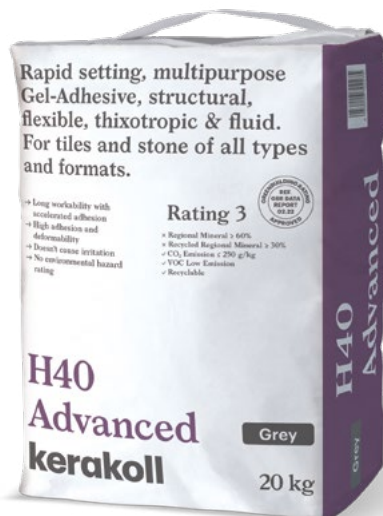


- **Extended workability with accelerated adhesion**
- **Thixotropic & fluid**
- **Superior rapid-setting performance**
- **No warning label**
- **Better coverage**



Grey

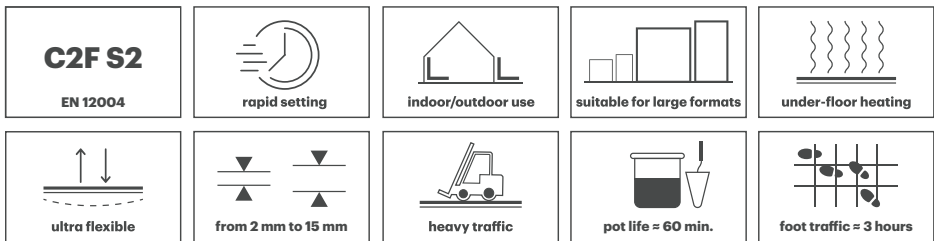
White



# H40 Ultimate

## The next generation rapid-setting and ultra flexible Gel-Adhesive.

The new H40 Ultimate Gel-Adhesive is the first of its kind - combining excellent workability with a high degree of flexibility and deformation, ensuring the utmost reliability even on difficult to tile substrates.

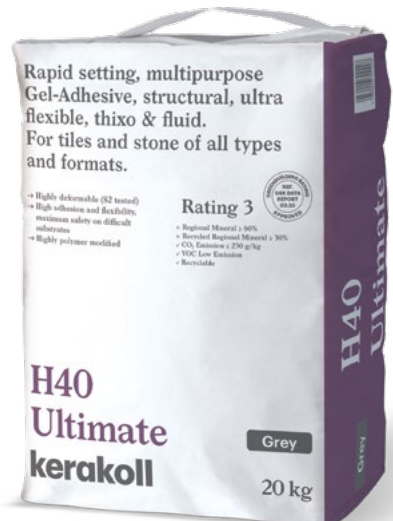


- **Highly deformable (S2 tested)**
- **Improved workability**
- **Highly adhesive and flexible, guaranteed results on difficult substrates**
- **Highly polymer modified**
- **No warning label**



Grey

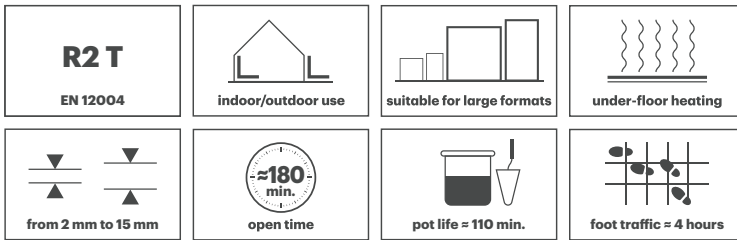
White



# H40 Extreme

## The next generation hybrid Gel-Adhesive for extreme applications.

The new H40 Extreme hybrid Gel-Adhesive revolutionises the world of reactive adhesives thanks to its unique fluidity and extreme flexibility, making it the ideal solution for the most extreme installation conditions.



- **Extreme adhesion**
- **Extreme fluidity**
- **Extreme deformability**
- **Extreme flexibility**
- **Direct installation to metal and fiberglass**



White





kerakoll

# Gel-Technology by Kerakoll.

The researchers behind gel technology studied the behaviour of natural elements and eco-friendly raw materials and applied these to adhesives to get the perfect balance between final performance and ease of use on site.

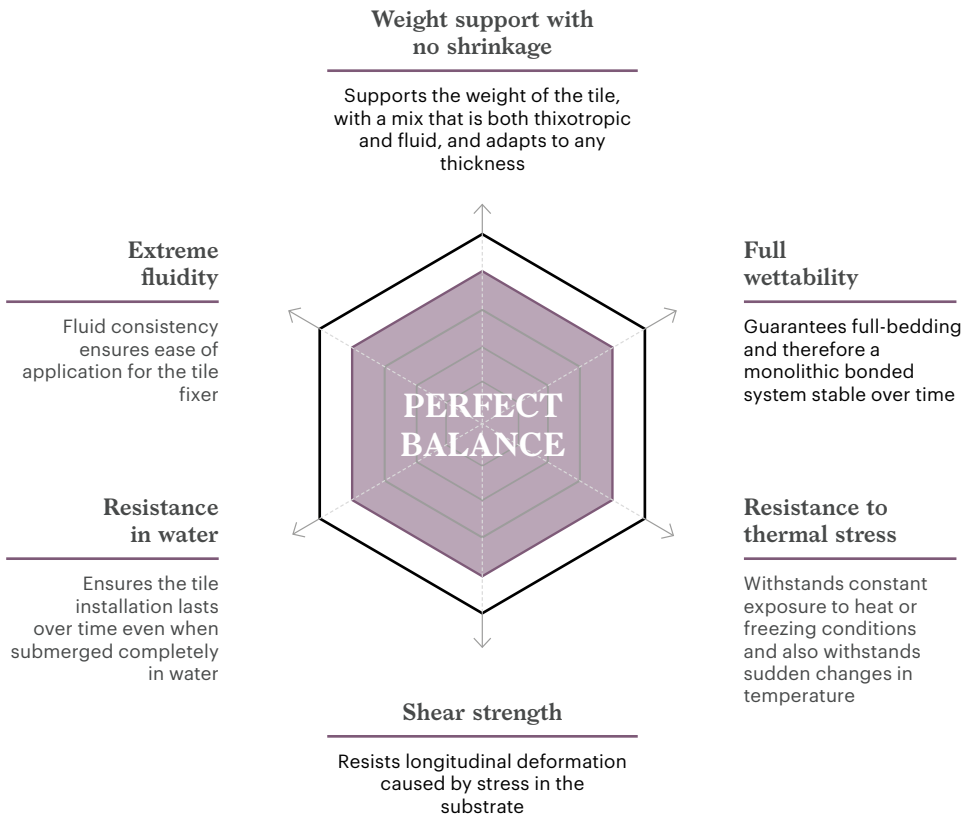
**GEL**  
TECHNOLOGY





# The perfect gel formula: six parameters to achieve the perfect technical balance.

The study of the perfect gel formula is based on the identification of six fundamental parameters related to the most important characteristics of workability and mechanical performance. Kerakoll researchers carried out numerous tests to maximise and balance all these parameters in the laboratory and on the building site. The perfect gel formula was created only after this long process.



# Tested for the entire life-cycle of the tiling installation.

Kerakoll researchers verify the durability of H40 Gel-Adhesives using the SAS method, which overcomes the limitations of the Standard by subjecting the fixed system to strain tests which simulate a floor's life cycle. The sample is subjected to 20 mechanical stress cycles, 50 thermal stress cycles and finally 50 freeze-thaw cycles. Once the process is complete, they carry out tensile and shear strength tests to make sure that the gel-adhesives outperform the Standard's stipulated values. H40 Gel-Adhesives pass every challenge with unparalleled real-world durability.

**H40 Gel-Adhesives encompass numerous advantages; here are their fundamental attributes:**

→ **Unique workability**

Designed for the professional tile fixer making it simple to choose, easy to use and risk-free.

→ **Superior performance**

Guaranteed technical performance; subject to stringent testing which reproduces the actual conditions that a tiling installation is subjected to over its life cycle.

→ **Actual durability**

More sustainable, thanks to the use of selected innovative raw materials.

→ **Total safety**

Very low VOC emissions, non-toxic, and non-hazardous to health of fixers and end users.





# H40 range

## The next generation

### Gel-Adhesives:

# Shock White colour.

The unmistakable Shock White colour of H40 Gel, Advanced and Ultimate comes from specially selected raw materials such as pure white cements, born from Kerakoll's desire to meet the needs of the most demanding tiling professionals.

The only way to get the Shock White colour is to choose elements and raw materials of the highest quality for perfectly formulated Gel-Adhesives.

#### → **Optimum rheology**

Improved workability thanks to the use of inert spherical material.

#### → **Better coverage**

Pure white carbonate when mixed with water increases coverage and workability and improves the mix.

#### → **Ideal for marble and natural stone**

Perfect for use with all kinds of marble and natural stone, and with light coloured grouts.



**The new H40 Gel-Adhesives  
Shock White**



# H40 range

## The next generation

### Gel-Adhesives: multipurpose.

The new Gel-Adhesives of the H40 range are the right solution for every situation because they ensure performance levels above the limits of the Standard with any type of material and on any type of substrate.



- Guaranteed results on every substrate with any type of tile.
- The universal solution for the most varied project and site requirements.

#### Materials H40

- Ceramic tiles
- Porcelain (inc. 20 mm)
- Laminated stoneware
- Low thickness slabs
- Large size
- Marble/Natural stone
- Glass mosaics
- Thermal and acoustic insulation
- Terracotta - Klinker
- Recomposed materials/Quartz
- Glass tiles

#### Coverage

| Notched trowel size | 6 mm               | 10 mm               | 12 mm              |
|---------------------|--------------------|---------------------|--------------------|
| H40 Gel White       | 9.6 m <sup>2</sup> | 6.2 m <sup>2</sup>  | 5 m <sup>2</sup>   |
| H40 Gel Grey        | 9 m <sup>2</sup>   | 6 m <sup>2</sup>    | 4.6 m <sup>2</sup> |
| H40 Advanced White  | 9.4 m <sup>2</sup> | 6.1 m <sup>2</sup>  | 4.8 m <sup>2</sup> |
| H40 Advanced Grey   | 8.9 m <sup>2</sup> | 5.9 m <sup>2</sup>  | 4.5 m <sup>2</sup> |
| H40 Ultimate White  | 9.4 m <sup>2</sup> | 6.1 m <sup>2</sup>  | 4.8 m <sup>2</sup> |
| H40 Ultimate Grey   | 8.9 m <sup>2</sup> | 5.9 m <sup>2</sup>  | 4.5 m <sup>2</sup> |
| H40 Extreme         | 3.5 m <sup>2</sup> | 2.35 m <sup>2</sup> | N/A                |



## H40 Gel/H40 Advanced/H40 Ultimate

| Purpose | Substrates                      | Primers        | Dilution  | Coverage/<br>1 kg ** |
|---------|---------------------------------|----------------|---|----------------------|
| P       | lime/cement based render        | → Primer A Eco | 3:1   | 30 m <sup>2</sup>    |
| P       | plasterboard                    | → Primer A Eco | 3:1   | 30 m <sup>2</sup>    |
| P       | brick/blockwork                 | → Primer A Eco | 3:1   | 30 m <sup>2</sup>    |
| P/I     | plasters                        | → Primer A Eco | 1 <sup>st</sup> coat 3:1 – 2 <sup>nd</sup> coat 2:1 | 12.5 m <sup>2</sup>  |
| P/I     | calcium sulphate-based screeds  | → Primer A Eco | 1 <sup>st</sup> coat 3:1 – 2 <sup>nd</sup> coat 1:1 | 6 m <sup>2</sup>     |
| P       | lime/cement based screeds       | → Primer A Eco | 3:1   | 30 m <sup>2</sup>    |
| A       | plywood                         | → Keragrip Eco | neat  | 7.5 m <sup>2</sup>   |
| A       | pvc/vinyl tiles                 | → Keragrip Eco | neat  | 7.5 m <sup>2</sup>   |
| A       | polished concrete               | → Keragrip Eco | neat  | 7.5 m <sup>2</sup>   |
| N/A     | existing tiles                  | → N/A          | N/A   | N/A                  |
| A       | flooring grade asphalt/bitumen* | → Keragrip Eco | neat  | 7.5 m <sup>2</sup>   |
| N/A     | waterproofing products          | → N/A          | N/A   | N/A                  |
| P       | porous tile backer boards       | → Primer A Eco | 3:1   | 30 m <sup>2</sup>    |

## H40 Extreme

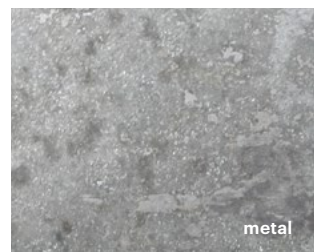
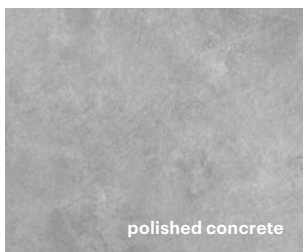
| Purpose | Substrates     | Primers | Dilution | Coverage/<br>1 kg ** |
|---------|----------------|---------|----------|----------------------|
| N/A     | GRP/Fibreglass | → N/A   | N/A      | N/A                  |
| N/A     | metal          | → N/A   | N/A      | N/A                  |

**P:** porosity / **P/I:** porosity & isolation / **A:** adhesion / **N/A:** not applicable

\* Internal use only.

\*\* Coverage will vary depending on porosity of substrate and method of application.

It is essential to check and properly prepare the substrate to guarantee maximum performance. For any other scenario, please contact Kerakoll Customer Service on Tel +44 01772 456 831 or email [info@kerakoll.co.uk](mailto:info@kerakoll.co.uk)



# H40 range

## The next generation

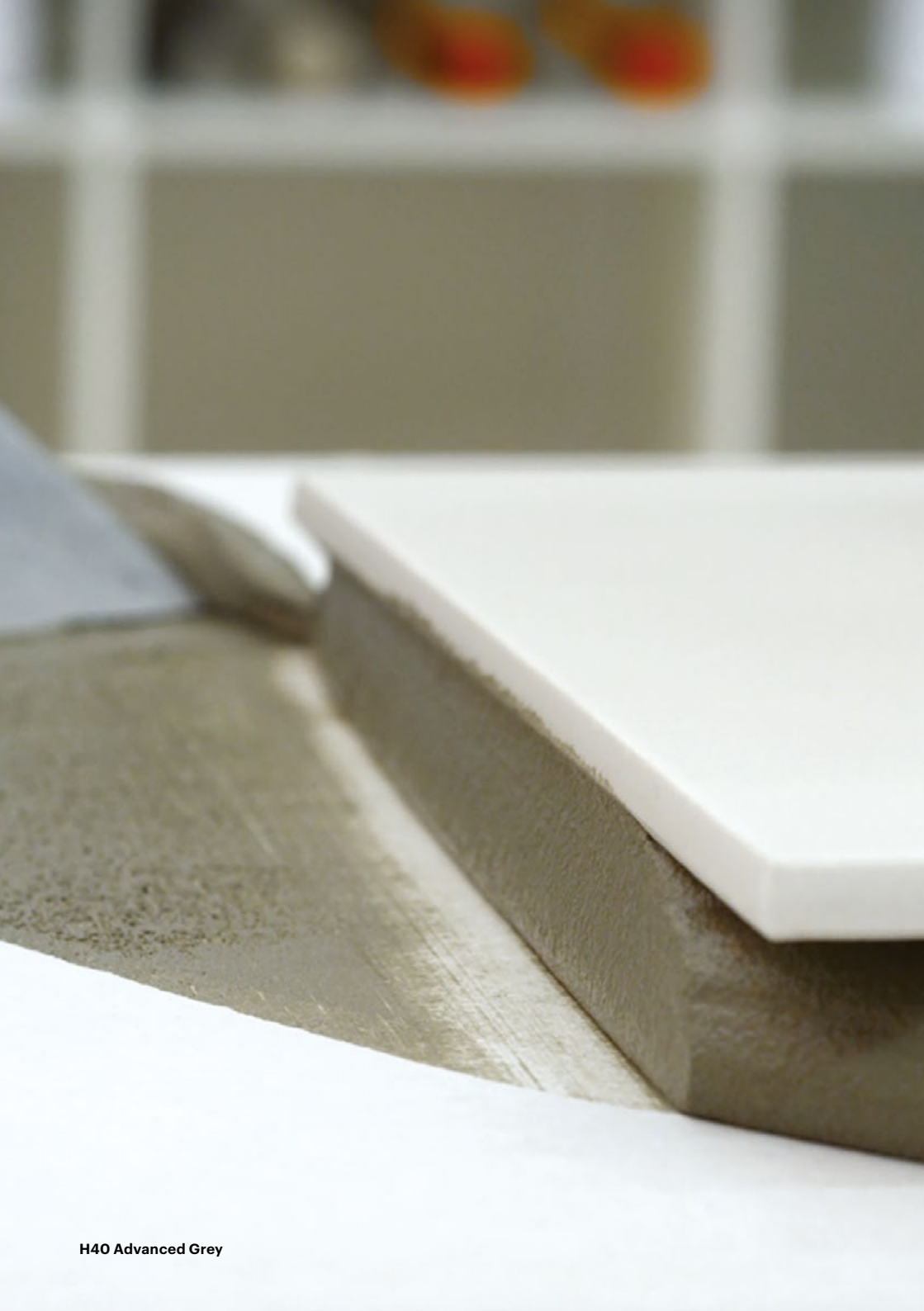
### Gel-Adhesives: thixotropic & fluid that maintain shape.

H40 Gel, H40 Advanced and H40 Ultimate are thixotropic adhesives with variable rheology; soft and workable when applied with a spreader, they don't sink under the weight of the tile. This makes it easier for the tile fixer to create a perfectly level installation without compromising workability. They hold the tile with no vertical slip and are suitable for all types of substrate.

- Support the weight of the tile while maintaining shape and thickness without slumping.
- Make it easy to create an even surface without tile lippage.
- With no vertical slip, allowing wall tiles to be fixed from the top down as well as from the bottom up.







**H40 Advanced Grey**

# H40 range

## The next generation

### Gel-Adhesives:

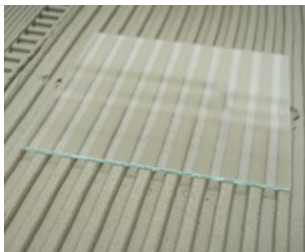
# total wettability.

The new H40 Gel-Adhesives fully wet the back of the tile and make it easier to solid bed the tiles. Creating a compact layer of adhesive between the substrate and the tile without any voids maximises the contact surface ensuring a long-lasting bond.

The uniform and monolithic layer of H40 ensures correct distribution of loads, avoids breakage and helps to maintain the performance level of the system even in difficult working conditions.

The extended open time prevents the adhesive from thickening or a skin from forming to ensure a good bond.

- Make it easier to solid bed the tiles.
- Ensure perfect laying with both traditional formats and large format slabs.
- Do not allow a skin to form or thickening.



**Wettability test: a simple pressure is enough to obtain full-bedding under the tile**



H40 Advanced Grey



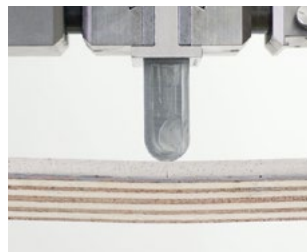
# H40 range

## The next generation Gel-Adhesives: structural and flexible.

The H40 range of Gel-Adhesives forms a structural bond with the elements making up the installation and evens out the stresses to which the tiling is subjected.

The specific rheological modifiers that they contain increase the adhesives' flexibility and performance, and allow them to withstand the stresses caused by the most deformable and flexible substrates.

- Create a structural bond between the substrate and the tile which will ensure durability over time.
- Suitable for deformable substrates such as wood and metal.
- The inclusion of additives improves flexibility without affecting workability, ensuring the best possible on site performance.





# H40 range: the solution for every situation.

Kerakoll systems offer unrivalled technical and aesthetic performance, guaranteeing the quality, safety and comfort of the tiling installations for which they are used.



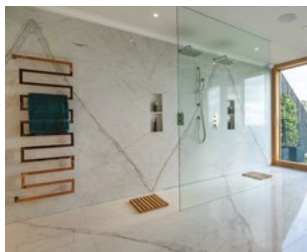
## → **Large format tiles**

H40 Gel-Adhesives provide superior wettability and allow for easy full-bedding with a thixotropic and fluid mix, which is easy to spread and at the same time supports the weight of the slab with no shrinkage. High resistance to shear stresses caused by longitudinal deformations, and extended open time allow for safe and durable laying.



## → **Heated screeds**

H40 Gel-Adhesives respond perfectly to the shear stresses caused by temperature changes in a heated screed. In addition, their calibrated flexibility allows for safe installation in the case of compressible substrates, enabling installation in variable thicknesses with lowered systems.



## → **Wet room**

The unique workability of the gel-adhesives makes it easy to create the perfect wetroom using Kerakoll's Nanodefense Eco tanking system with H40 Gel, Advanced or Ultimate for a long-lasting, reliable, bonded installation that is resistant to water.



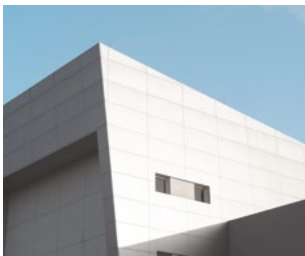
### → **Swimming-pools**

The superior wettability and strong bond of the next generation Gel-Adhesives creates a monolithic bonded system even in pools where the installation is in constant contact with water. The mix is easy to spread and work with on all types of tiles commonly used in swimming pools.



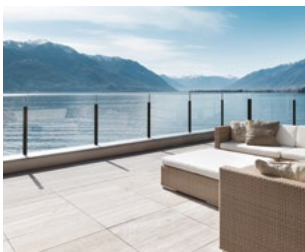
### → **Heavy traffic**

Solid bedding and a strong adhesive bond are particularly important in areas subject to heavy traffic. H40 Gel-Adhesives provide an excellent structural bond, capable of distributing and absorbing the stresses caused by dynamic loads.



### → **Facades**

Even large format slabs can be fixed safely onto facades using the H40 Gel-Adhesives; they hold the tile with full coverage and no vertical slip and their high shear strength guards against system failure, even when subjected to significant changes in temperature.



### → **Waterproofing Systems**

The perfect fusion of Aquastop Nanoflex and H40 Gel or Advanced creates a monolithic system that is waterproof and resistant to shear stresses. Superior wettability makes it easy to achieve full-bedding and ensure the durability of the entire fixing system.







Kerakoll UK Ltd  
Tomlinson Road, Leyland, Lancashire PR25 2DY,  
United Kingdom  
Tel +44 01772 456 831  
info@kerakoll.co.uk



**kerakoll**

[kerakoll.com](http://kerakoll.com)